



# ACCREDITED ASSESSOR

## MOT

### Pre-requisites

- MOT qualification for the class to be assessed (please include copy of certificate)
- Previous MOT tester for the class to be assessed

### The two day workshop will cover the following

#### Qualification specific requirements

- Qualification guidance
- Structure and Units
- Assessments
- Support materials

#### MOT Tester content

- Eligibility for prospective MOT testers and managers
- Process of becoming an MOT tester, continuous compliance and discipline
- The ethical standards required within the MOT scheme
- Technical standards LV/MC
  - Equipment
  - Test Classes
  - Body, Structure, Corrosion and General items
  - Lamps, Reflectors and electrical items
  - Wheels and tyres
  - Seat belts
  - Fuel and emissions
  - Drivers view of the road
  - Steering and suspension
  - Brakes
- Documentation/electronic recording

### The one day Accredited Assessor Workshop will cover the following

- Overview of the IMI & accreditations
- An understanding of quality assurance
- An understanding of processes and procedures relating to IMI accreditations
- How to provide and record feedback
- How to record assessment decisions
- Good practice pre, during and post assessments

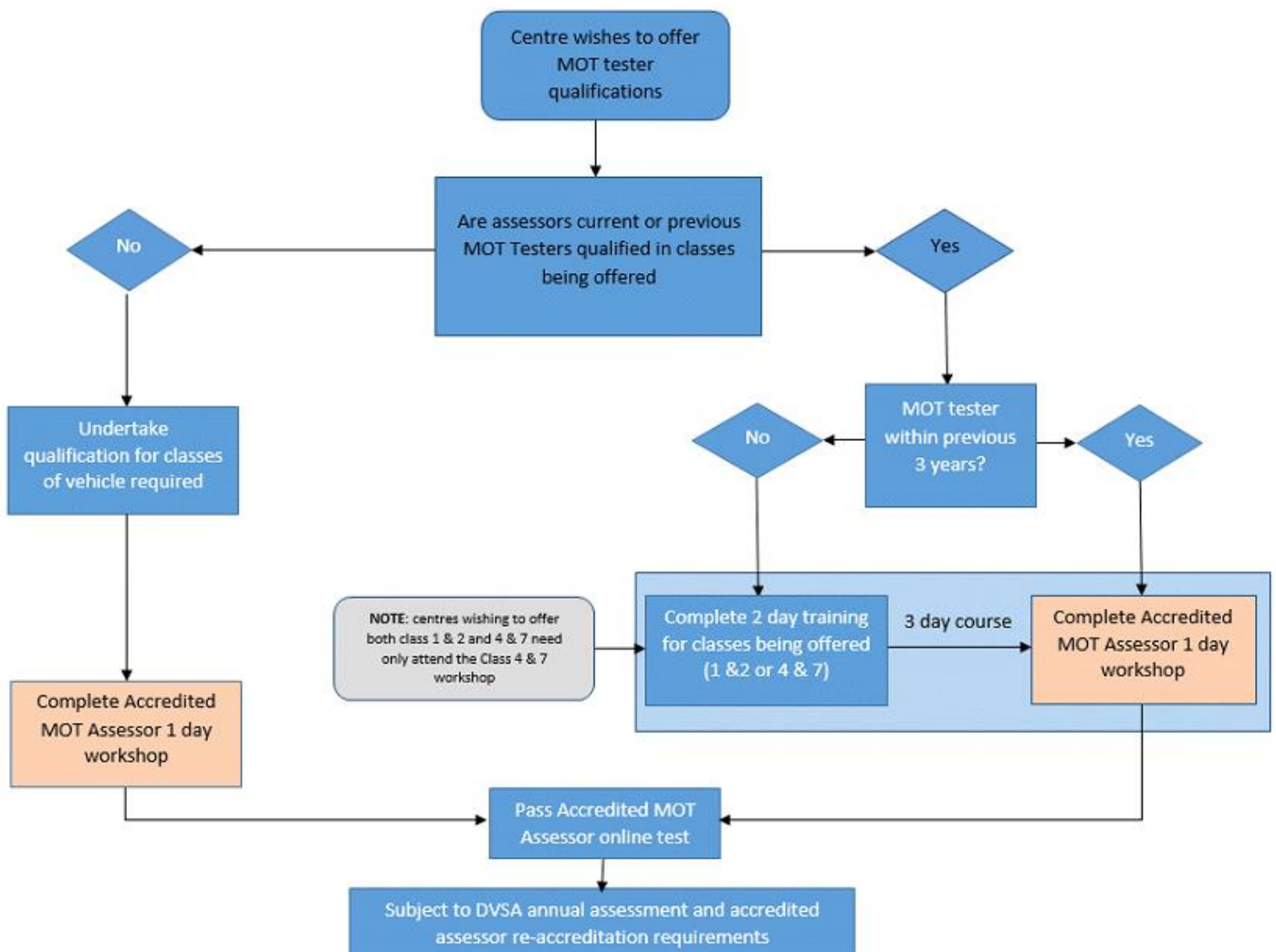
Effective Date:	DD Month YYYY	Doc. Owner:	Head of .....
Issue:	1, 2, 3, 4, 5	Master Proc.:	N/A (if it is the Master Doc) / A01 – Title of Document

- Complaints and appeals procedures
- An overview of the IMI Professional Register
- Website navigation including the online assessment portal

Using the flowchart below please select which workshop you will need to take part in (please highlight or tick the correct option)

2 day workshop + 1 day accredited assessor

1 day accredited assessor



Effective Date:	DD Month YYYY	Doc. Owner:	Head of .....
Issue:	1, 2, 3, 4, 5	Master Proc.:	N/A (if it is the Master Doc) / A01 – Title of Document